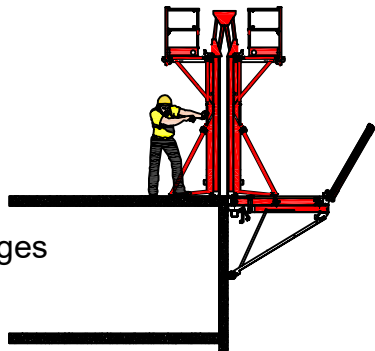


VOILES

Coulage de voile en superstructure

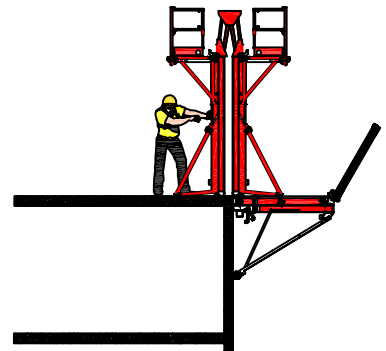
Etape 1

Desserrage des tiges



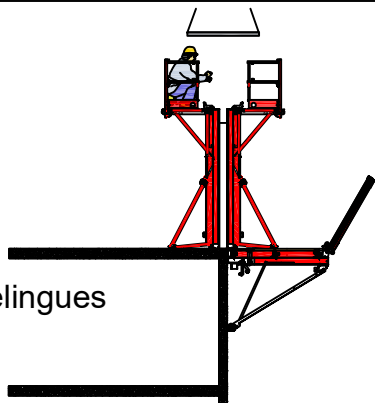
Etape 2

Décoffrage



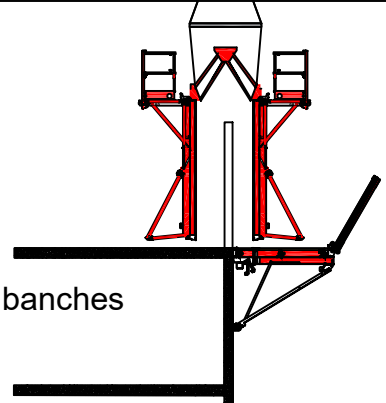
Etape 3

Accrochage des élingues



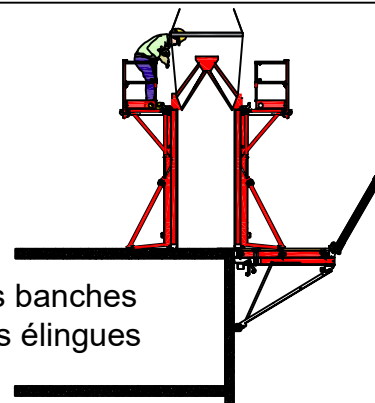
Etape 4

Enlèvement des banches



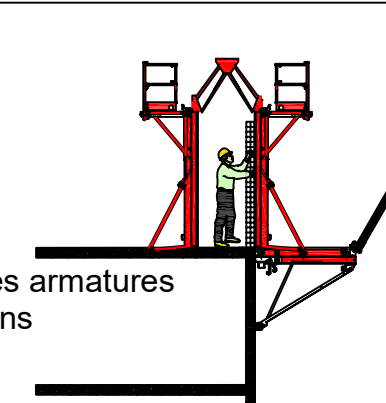
Etape 5

Mise en place des banches et décrochage des élingues



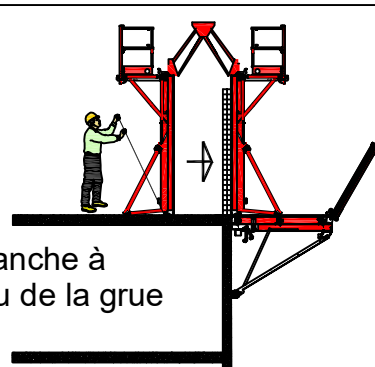
Etape 6

Nettoyage
Mise en place des armatures
et des réservations



Etape 7

Fermeture de la banche à
l'aide d'un levier ou de la grue



Etape 8

Bétonnage

